

Kaypee Equipments Private Limited

About Us

Kay Pee Equipments Pvt. Ltd. is a reputed organisation based at Howrah. We are engaged in the manufacturing of various types of mechanical safety equipments, bogie items, assembly and sub-assemblies for various public & private sectors like Indian Railways, steel plants, aluminium industries, etc. Continual improvement of quality by sophisticated machineries, technologies with highly skilled technical personnel are one of the trait that identify us.

46/6/2, Chatterjee Para
Lane Kadamtala Howrah -
711 101, India

(033) 2643-8997 / 8293 / 5353

kpehwh1990@gmail.com

<https://www.facebook.com/Kay-Pee-Equipments-107055384221081/>

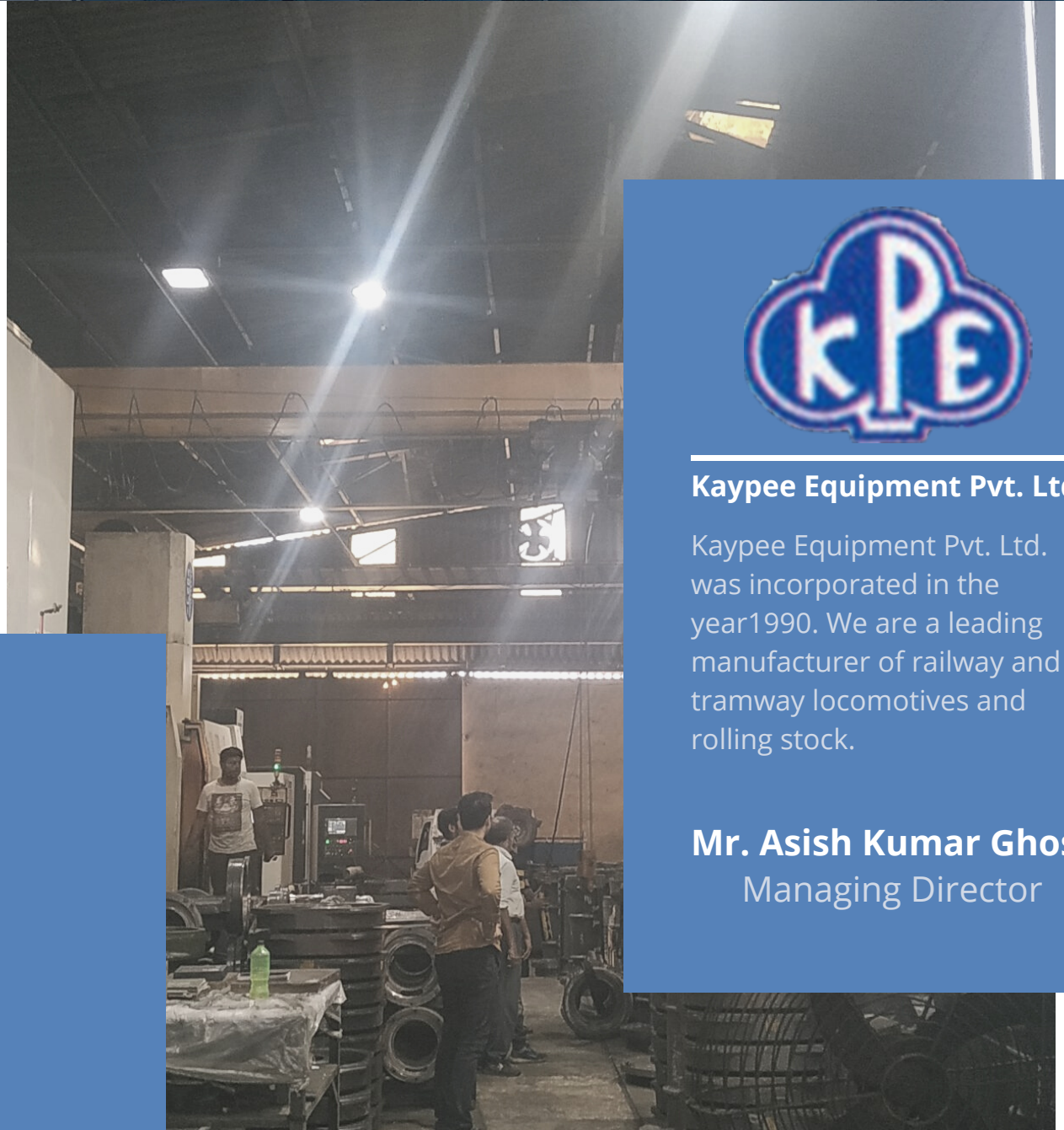
<https://www.linkedin.com/in/kaypee-equipments-private-limited-14a629207/>



Kaypee Equipment Pvt. Ltd.

Kaypee Equipment Pvt. Ltd. was incorporated in the year 1990. We are a leading manufacturer of railway and tramway locomotives and rolling stock.

Mr. Asish Kumar Ghosh
Managing Director



Who We are

Kay Pee Equipments Private Limited (KPE) is a manufacturing organisation based in Howrah, West Bengal. Established in 1990 by Late Kashi Nath Ghosh father of Asish Kumar Ghosh, the current chairman and managing director, KPE has become one of the leading manufacturer and supplier of railway engine and locomotive equipment and spare parts, with a national presence.

With over two decades of experience, we engaged in the manufacturing of various types of mechanical spares, equipment, assembly and sub-assemblies for the Indian Railways and other private corporations.

We follow an well-proven path of work management and take a customer-centric approach to all our projects. Guided by visionary leadership, the dedicated and skilled professionals at KPE use state-of-the-art infrastructure and machinery to provide our customers with top quality products and services. Authority is decentralised, yet the functional activities are smoothly coordinated to achieve seamless fit. Decision-making takes place independent at various levels, cutting down bureaucratic barriers. Ensuring the satisfaction of our customers is the at the core of KPE's values.

Technology improvement is an ongoing activity at KPE. Over time, we have expanded and augmented our production facilities, integrated VMC, HMC, VTL and CNC machinery to increase production, adopted modern CAD/CAM and CMM for inspection accuracy and so on. To ensure quality management, we have acquired necessary accreditations with ISO and incorporated testing facilities that are up to the mark for all checks to be conducted in- house, approved by various relevant authorities.

Our Mission

KPE is committed towards the growth of Indian Railways by continuing to manufacture and supply quality products and provide services that meets the demands of our customers, while ensuring the safety and well-being of our employees and communities, and thereby fostering our own growth.

Our Product Range

- All types of precision mechanical jobs.
- Heavy fabricating jobs/medium fabricating jobs.
- Heavy machined alloy steel components
- Cast iron SGCI products
- Forged & machined components.

Our Services

- Rehabilitation and overhauling of bogies for Indian Railways.
- Machining & assembling of casnub bogies.
- Designing, manufacturing & erection of sector gate for delivering red mud code.
- Designing, manufacturing & supply of Hammer mill, point feeder assembly.

After Sales Service: KPE also strives for complete customer satisfaction hence we have a proper system of after sales services in order to contribute proactively to the profitability and Customer's delight and finally an enviable Market reputation

Infrastructure and Machinery



Over the years, Kay Pee Equipments Private Limited (KPE) has been committed towards improving its production capabilities and manufacturing infrastructure to ensure it continues to be a leading supplier of railway engine parts. All our manufacturing units are equipped with latest production technologies and adhere to strict quality standards. Currently, KPE has five production units situated near Howrah, India. All units consist of semi-automatic machines and CNC machining centres which are capable of undertaking numerous manufacturing operations like boring, milling, shaping, drilling, tapping, grinding etc. The machine shops are operated by highly trained professionals, with years of experience. All our machining job is carried out in-house, along with the required quality assurance tests.



Activities Undertaken by KPE (Our production capacity in brief)

Fabrication: Monthly 100 - 120 ton, unit capacity 25 tons

Casting: Machined Alloy Steel, CI, SGCI product, monthly capacity 150 ton approx.

Forging: Capacity 150 ton press, monthly production capacity 50 tons.

Machines: CNC, HMC and VMC, VTL, Boring machine, Radial Drill, CNC horizontal turning centre Lathes, universal & vertical milling machines, planing machines, lathes, capstan shaper machines, slotting machines, plano-grinding machines, MOXY acetyline, profile cutter, welding rectifier, MIG & TIG and portable welding machines, plate bending machines, shearing machines, CMM machines for precision measurement etc.

Quality Policy & Testing Facilities

Quality Policy

At Kay Pee Equipments Private Limited, we strive to provide our customers with products and services which meet and even exceed their expectations. Quality is important to our business because we value our customers. We are committed to the Total Quality Control, complying with ISO 9001:2008 standards. We have a well-documented quality policy and objectives that are implemented and maintained at all levels of the organization. Regular renewal of various procedures in relation to the quality, Quality Audit and training programmes for our personnel ensures the excellent standards of our products in terms of Quality.

Quality Objectives

- Customer's satisfaction in terms of specified requirement by means of TQM.
- Monitoring & Development of supplier's performance.
- Efficiently planned production in terms of quality and quantity as well.
- Maintaining credible reputation of the company.
- To make sure the optimum utilization of our resources including our manpower

Testing Facilities

We have the following technology, equipment and procedures in place to support us in our aim of total customer satisfaction and continuous improvement in quality of our products:

1. CNC Horizontal Machine Centre size minimum 1250X1000 mm Pallet suitable for machining 800 mm diameter & min 1100 mm length with 20 micron accuracy.
2. Marking/Measuring Table of suitable size
3. Facilities for stamping of identification markings as per specification
4. Co-ordinate Measuring Machine of minimum size of 1000X1500X800 mm with minimum accuracy of 20 micron for final inspection before dispatch
5. Ultrasonic Digital Coating Thickness Gauges
6. Calibrated measuring instruments like Vernier Calliper, Micrometre, Inside & Outside Callipers, Height Gauges and all other gauges required during matching operation and dimensional checks.
7. Thread Plug Gauges for checking threading portion duly calibrated, and hard and ground pins to check accuracy of hole diameter of pole shoes fixing bolts.
8. Calibrated template to check the centre of both poles
9. Infra-Red thermometer checking temperature of material standard room before dimensional checks

OUR PRODUCTS



AXLE BOX



DRIVE ASSEMBLY
COMPONENTS



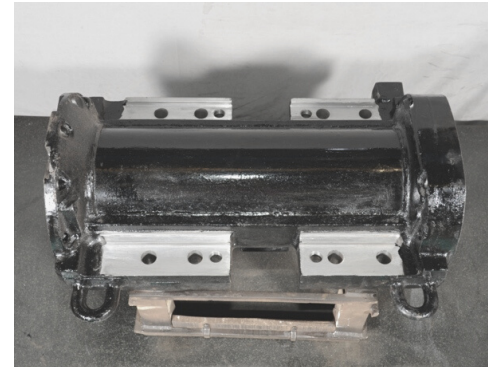
BAR BOGIE HEAD BEAM



FABRICATED
LOCOMOTIVE CAB



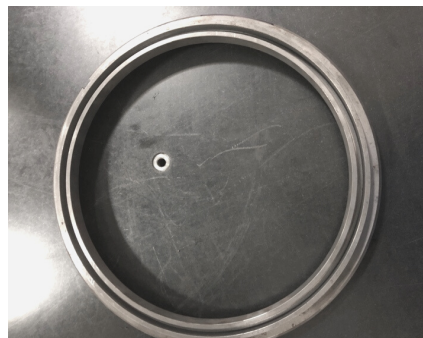
GEAR CASE



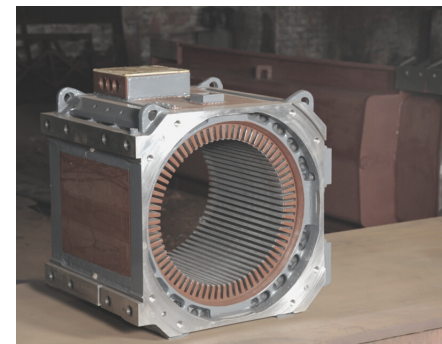
HOUSING
BEARING KIT



KIT FOR MAGNET FRAME



LABYRINTH RINGS

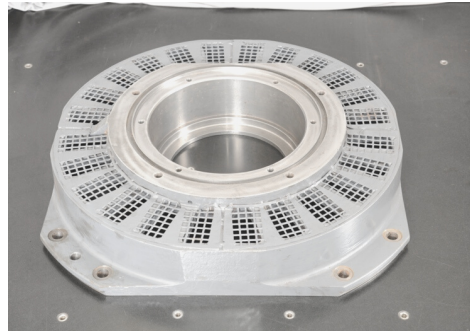


MACHINED STATOR

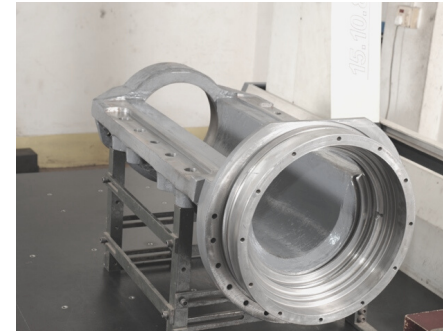
OUR PRODUCTS



OIL PAN



STATOR CAMBER AND ASSOCIATED COMPONENTS



SUSPENSION TUBE



TORQUE SUPPORT



WHEEL SET GUIDE

Contact Us



Our product range includes all types of precision mechanical equipments for Electric and Diesel locomotives, forged and machined components, heavy machined steel components, heavy or medium fabricated items and cast iron SGCI products.



46/6/2, Chatterjee Para Lane
Kadamtala Howrah - 711 101, India



(033) 2643-8997 / 8293 / 5353



kpehwh1990@gmail.com



<https://www.facebook.com/Kay-Pee-Equipments-107055384221081/>



<https://www.linkedin.com/in/kay-pee-equipments-private-limited-14a629207/>

Contact Us